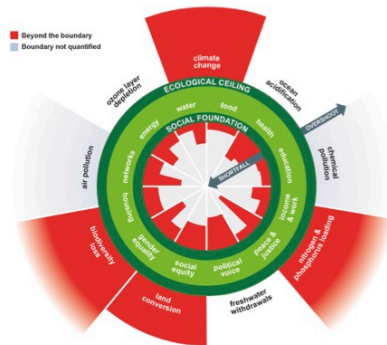


IF A GOOD HOUSE IS A HUMAN RIGHT...

My question, as an involved architect:

HOW CAN WE, AT THE SAME TIME:

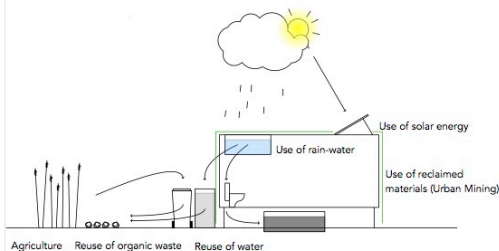
1. PROVIDE SAFE HOUSING FOR NEW GENERATIONS?
2. IMPROVE EARTH'S ECOSYSTEM?



*by Kate Raworth

WHAT IF THESE NEW HOUSES ARE BIOBASED, CAN BE REUSED, GROW AND SHRINK WHEN NECESSARY?

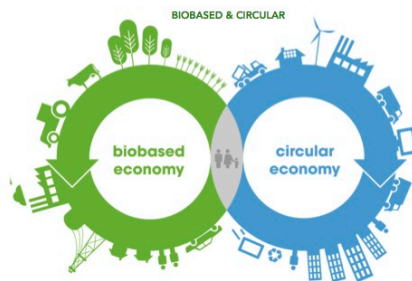
SO, ONCE PRODUCED, THEY WILL NEVER LEAVE THE GREEN CIRCLE AGAIN...



THE MOST REALISTIC STRATEGY TO ACHIEVE BOTH GOALS, IS TO STAY WITHIN THE BANDWIDTH OF THE DOUGHNUT ECONOMY.

NEW ECONOMIES ARE GROWING RAPIDLY, BUT HOW MANY MORE CONSUMERS CAN OUR ECOSYSTEM HOLD AND FEED?

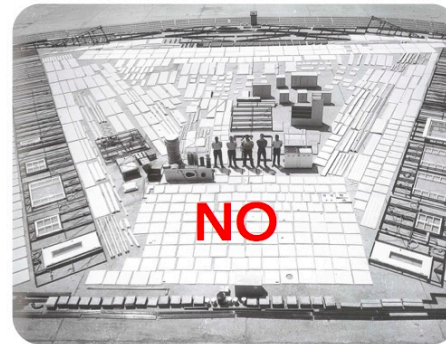
GOOD HOUSING ALLOWS FAMILIES TO BE SAFER AND SMALLER...



EQUIPPED WITH THE RIGHT SMART TECH INSTALLATIONS. BUILDING CAN BE INFINITELY MORE SIMPLE AND SUSTAINABLE.

A GREEN AND CHEAP DIY EASY TO ADAPT TO CHANGING GEOGRAPHICAL & CLIMATOLOGICAL CHALLENGES.

DESIGN IT SIMPLE & REUSABLE SO PARTS CAN BE EXCHANGED...



YES

ONE ELEMENT
ONE SIZE

JUST in CASE

enabling humans to become a fair part of earth's ecosystem again.



providing an accessible, safe housing solution within the values of the Doughnut Economy*.



JUST in CASE (abstract)

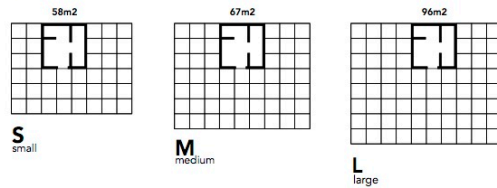
JEROEN VAN MECHELEN
.resilient spaces

(RE)-BUILDING TOGETHER; FROM FAVELA TO VILLA...

GROW, SHRINK, MOVABLE, REUSABLE, INTERCHANGEABLE



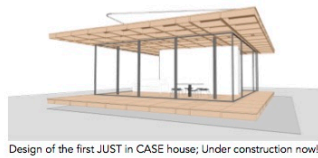
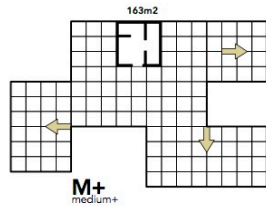
Constructing a JUST in CASE house is both a personal and a social event. Being able to build these houses yourself with friends of fellow victims, creates strong communities and personal pride.



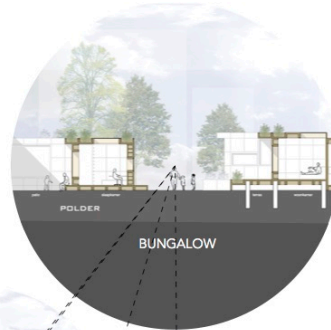
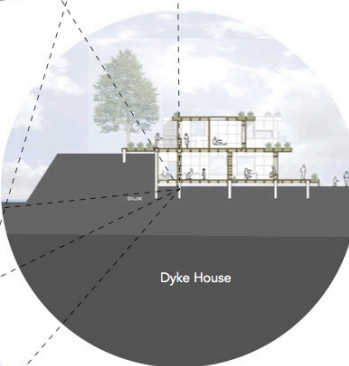
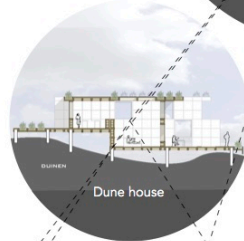
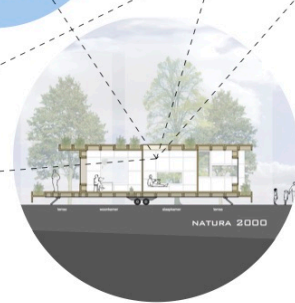
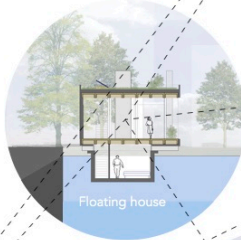
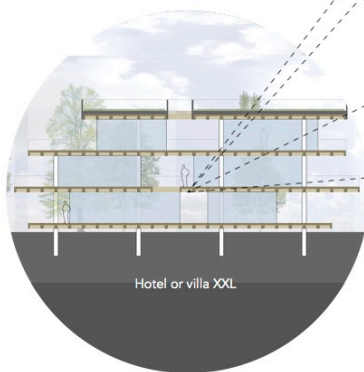
The SXM Home comes in many basic sizes for many variations of households. Some examples:

S > 1-4 people 58m2
M > 5-6 people 67m2
L > 7-10 people 96 m2

Every house can be extended as wished with the same JIC elements.



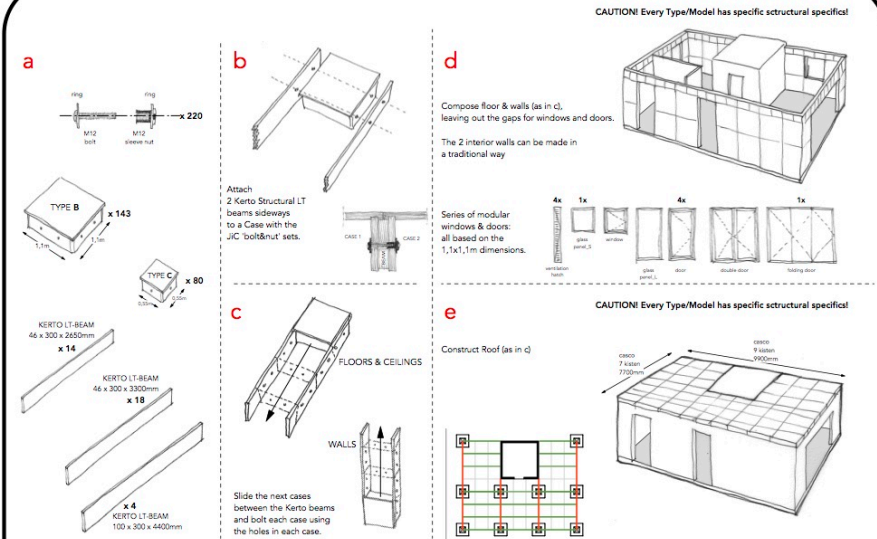
Design of the first JUST in CASE house; Under construction now!



JUST in CASE
offers a simple and cheap
biobased building system
that is reusable and
interchangeable.

Temporality does no longer
mean 'flimsy structure' or
'container house'. JIC is a
solid building solution, that
is easily transported and
adapted.

CUSTOMIZED TO LOCAL POSSIBILITIES...



CAUTION! Every Type/Model has specific structural specifications!

CAUTION! Every Type/Model has specific structural specifications!

Circular materials and a SXM_house

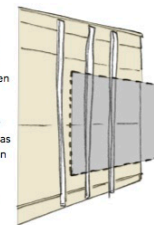
Of course, every suitable material for making facades can be bought and imported. However, a lot of used materials are still lying around, available to be reused for free. As the base of the JIC-system is very solid, it is easy to attach a new facade of old materials. Urban Mining is therefore the first logical option here. Numerous creative and beautiful examples can be found that will give your house protection and identity. Happy colors can always be painted on any material...



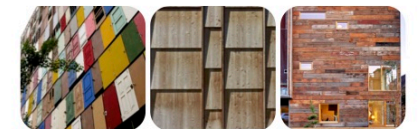
Cladding was never easier. The outside of the casco JIC-system has a flat wooden surface on which cladding materials can be mounted. By using vertical or horizontal lathens, or even directly on the cases.

In this way both a specially engineered facade as well as 'Urban Mined' materials can be applied.

Everyone can become the expert with all possible materials for numerous creative facade solutions.



SHEET METAL is still everywhere to be found on the island. Even damaged it is easy to model for next use.



WOOD can be found in many forms, planks, board or even used doors. Easy to model for the next use.



OTHER cheap materials like plastics, rubber or clay can become a beautiful and functional facade



BAMBOO grows fast in most local climates and is easily harvested and tailored to several applications